

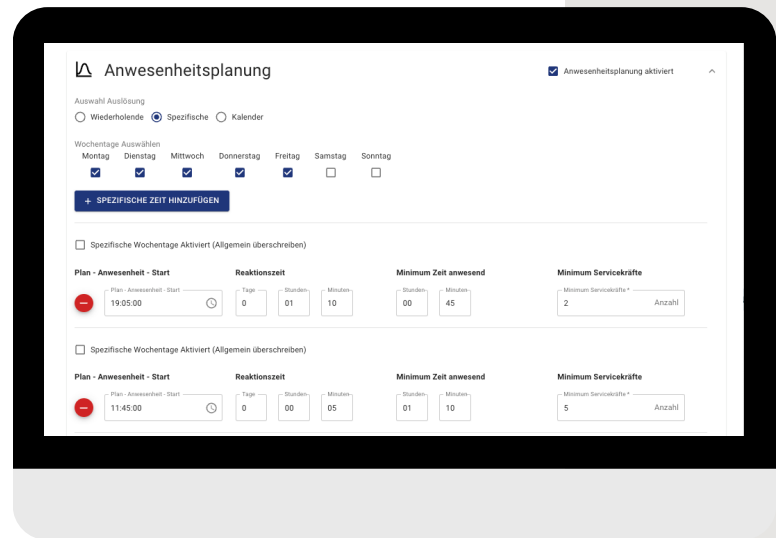


Time-tracking Pro

With our "Time Tracking Pro" additional license, we provide you with comprehensive personnel management. Service staff can not only access and confirm their services but also document their working hours. This enables extensive evaluations to be made available to your customers, and you can have a quick overview of object attendances at the touch of a button!

Attendance planning in the portal:

- On which days should service personnel come?
- At what time should service personnel arrive?
- How many service personnel should come?
- What response time would you like to allow for your service personnel?
- How long should the service personnel stay on the premises?

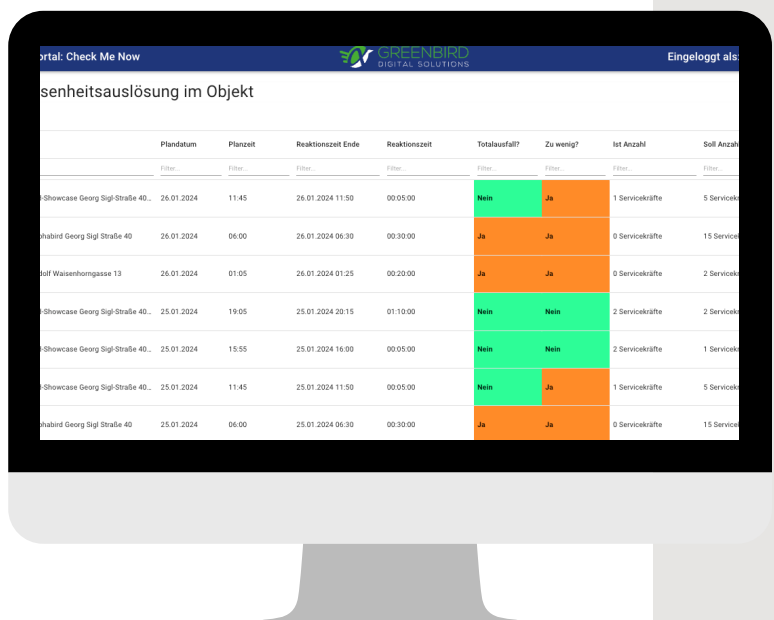


Entry to the premises using:

- QR code with mobile app
- NFC only on CMN-TOUCH
- RFID only on CMN-TAQT
-

Your benefit of CMN

- "Arrival" and "Departure" on demand in the portal
- Overview of arrivals and departures at the premises
- Notification in case of non-appearance
- Analysis of attendance by service personnel or premises possible



Objekt	Planndatum	Planzeit	Reaktionszeit Ende	Reaktionszeit	Totalausfall?	Zu wenig?	Ist Anzahl	Soll Anzahl
Showcase Georg Sigi-SträÙe 40.	26.01.2024	11:45	26.01.2024 11:50	00:05:00	Nein	Ja	1 Servicekräfte	5 Service
Habitat Georg Sigi-SträÙe 40	26.01.2024	06:00	26.01.2024 06:30	00:30:00	Ja	Ja	0 Servicekräfte	15 Service
Soll Waisenhomgasse 13	26.01.2024	01:05	26.01.2024 01:25	00:20:00	Ja	Ja	0 Servicekräfte	2 Service
Showcase Georg Sigi-SträÙe 40.	25.01.2024	19:05	25.01.2024 20:15	01:10:00	Nein	Nein	2 Servicekräfte	2 Service
Showcase Georg Sigi-SträÙe 40.	25.01.2024	15:55	25.01.2024 16:00	00:05:00	Nein	Nein	2 Servicekräfte	1 Service
Showcase Georg Sigi-SträÙe 40.	25.01.2024	11:45	25.01.2024 11:50	00:05:00	Nein	Ja	1 Servicekräfte	5 Service
Habitat Georg Sigi-SträÙe 40	25.01.2024	06:00	25.01.2024 06:30	00:30:00	Ja	Ja	0 Servicekräfte	15 Service